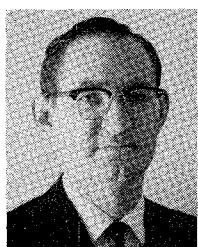


Contributors

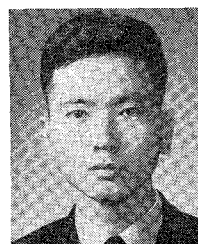


Ralph T. Compton, Jr. (S'58-M'59) was born in St. Louis, Mo., on July 26, 1935. He received the S.B. degree from the Massachusetts Institute of Technology, Cambridge, in 1958, and the M.Sc. and Ph.D. degrees from

The Ohio State University, Columbus, in 1961 and 1964, respectively, all in electrical engineering.

He was with DECO Electronics, Inc., Leesburg, Va., from 1958 to 1959, when he joined the Battelle Memorial Institute, Columbus, Ohio. In 1962 he became an Assistant Supervisor at the Antenna Laboratory, The Ohio State University, where in 1964, he became an Assistant Professor of Electrical Engineering. Since September, 1965, he has been an Assistant Professor of Engineering at Case Institute of Technology, Cleveland, Ohio.

Dr. Compton is a member of Sigma Xi and Pi Mu Epsilon.



Li-jen Du (S'64) was born in Harbin, China, on September 27, 1935. He received the B.S. degree from the National Taiwan University, Taiwan, China, in 1958, and the M.S. and Ph.D. degrees in electrical engineering from The

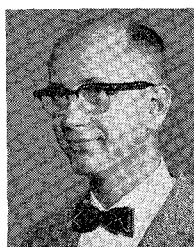
Ohio State University, Columbus, in 1962 and 1965, respectively.

From 1961 to 1962 he was with the Computer Center, Ohio State University. Since 1962 he has been associated with the Antenna Laboratory of The Ohio State University as a research assistant and from 1964, as a research associate working on problems in electromagnetic theory.

Dr. Du is a member of Sigma Xi.



George L. Matthaei (S'49-A'52-M'57-F'65) was born in Tacoma, Wash., on August 28, 1923. After leaving college for three years of

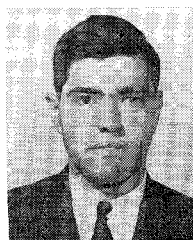


military service, he returned to the University of Washington, Seattle, and received the B.S. degree in electrical engineering in 1948. He then did graduate work at Stanford University, Calif., and received the

Ph.D. degree in electrical engineering in 1952.

While at Stanford he was a Research Assistant in the Electronics Research Laboratory where he did research on network synthesis. In 1951 he joined the faculty of the Division of Electrical Engineering of the University of California at Berkeley, where he became an assistant professor. He continued research on network synthesis and supervised graduate student research in that field. During 1955 to 1958 he was on the Technical Staff of the Ramo-Wooldridge Corp., Inglewood, Calif., engaged in system analysis and research on microwave components. From 1958 to 1964 he was at the Stanford Research Institute where he did research on microwave devices. He became Manager of the Electromagnetic Techniques Laboratory of SRI in 1962. In July, 1964, he joined the Dept. of Electrical Engineering of the University of California, Santa Barbara, Calif., where he is a Professor.

Dr. Matthaei is a member of Sigma Xi and Tau Beta Pi. He was the winner of the 1961 Microwave Prize of the IRE Professional Group on Microwave Theory and Techniques.



Elliott R. Nagelberg (M'61) was born in The Bronx, N. Y., on August 28, 1936. He received the B.E.E. degree from City College of New York, N. Y., in 1959 and the M.E.E. degree from New York University, N. Y., in

1961. In 1961 he was appointed a Howard Hughes Fellow in electrical engineering at

the California Institute of Technology Pasadena, and received the Ph.D. degree in 1964.

During his college years in New York he was a lecturer in electrical engineering at City College and part-time electronic engineer at the Heat and Mass Flow Analyzer Laboratory, Columbia University. In 1964 he joined the technical staff of Bell Telephone Laboratories, Whippany, N. J., where he is now a member of the Antenna Research Department, Military Research Laboratory.

Dr. Nagelberg is a member of Eta Kappa Nu, Sigma Xi, and the American Physical Society.



Leon J. Ricardi (S'48-A'50-M'55-SM'63) was born in Brockton, Mass., on March 21, 1924. He received the B.S. and M.S. degrees in electrical engineering from Northeastern University, Boston, Mass., in 1949 and 1952, respectively.

From 1949 to 1951 he was a project engineer with Andrew Alford Consulting Engineers of Boston, Mass., engaged in the design of special antennas for aircraft and submarines. From 1951 to 1954 he was a senior project engineer at the Gabriel Laboratories in Needham Heights, Mass., engaged in the design and development of military radar antenna systems. In 1954 he joined the staff of the M.I.T. Lincoln Laboratory, Lexington, Mass., where he is now leader of the RF Components group in the Communications Division. He has been instrumental in the design and development of a wide variety of satellite and large antennas for experimental and operational radar and radio communication systems. He is also in charge of propagation studies that are designed to increase our knowledge of the phenomena which affect satellite communication systems.

Mr. Ricardi is a member of Tau Beta Pi and Eta Kappa Nu.



Joshua Shefer (M'56-SM'62) was born in Leipzig, Germany, on November 1, 1924. He received the B.Sc. degree in electrical engineering from the Technion, Israel Institute of Technology, Haifa, in 1948, and the

Ph.D. degree from London University, England, in 1955.

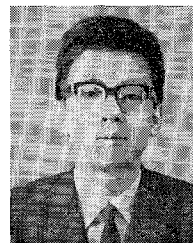
From 1948 to 1952 he was a member of the research staff of the Electronics Research Laboratory, Ministry of Defense, Tel Aviv. After his graduate work in England he returned to become head of a group engaged in microwave circuits and antennas. He also lectured on microwave theory and technique at the Technion from 1956 to 1958. In 1958

he was appointed Scientific Attaché at the Embassy of Israel in London, and in 1960 he joined the Gordon McKay Laboratory, Harvard University, Cambridge, Mass., as Research Fellow in Applied Physics, where he worked on problems of surface wave guiding structures and antennas. In 1962 he joined the technical staff of Bell Telephone Laboratories Whippany, N. J., where he has been engaged in studies of microwave propagation and antennas.

Dr. Shefer is a member of IEE (London) and Sigma Xi.



Sadakuni Shimada (M'62) was born in Fukuoka Prefecture, Japan, on March 12, 1938. He received the B.S. degree in electrical engineering from Tokyo Institute of



Technology, Tokyo, Japan, in 1960.

From 1960 to February, 1966, he was engaged in research on millimeter wave techniques and components at the Central Research Laboratory of Hitachi, Ltd., Tokyo. In

March, 1966, he joined Electrical Communication Laboratory of Nippon Telegraph and Telephone Public Corporation, Tokyo, where he is concerned with research on millimeter wave components for the millimeter wave communication system.

Mr. Shimada is a member of the Institute of Electrical Communication Engineers of Japan and Japan Society of Applied Physics.